

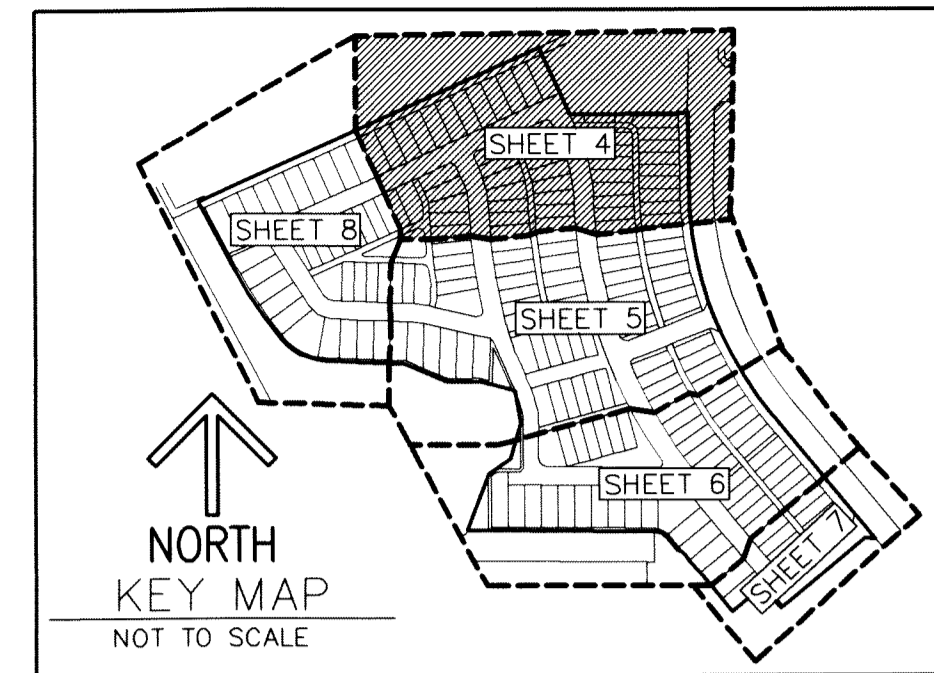
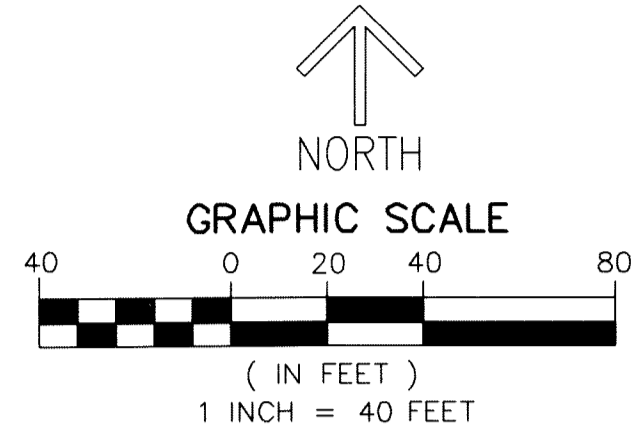
ALTON NEIGHBORHOOD 3

BEING A REPLAT OF ALL OF TRACT "E" AND A PORTION OF TRACT "F", ALTON PCD-TRACTS DEF, AS RECORDED IN PLAT BOOK 124, PAGES 156 THROUGH 159,
 TOGETHER WITH A PORTION OF TRACT "O-10", ALTON PCD, AS RECORDED IN PLAT BOOK 118, PAGES 197 THROUGH 206,
 BOTH OF PUBLIC RECORDS OF PALM BEACH COUNTY, FLORIDA, LYING IN SECTIONS 26 AND 35, TOWNSHIP 41 SOUTH, RANGE 42 EAST,
 CITY OF PALM BEACH GARDENS, PALM BEACH COUNTY, FLORIDA

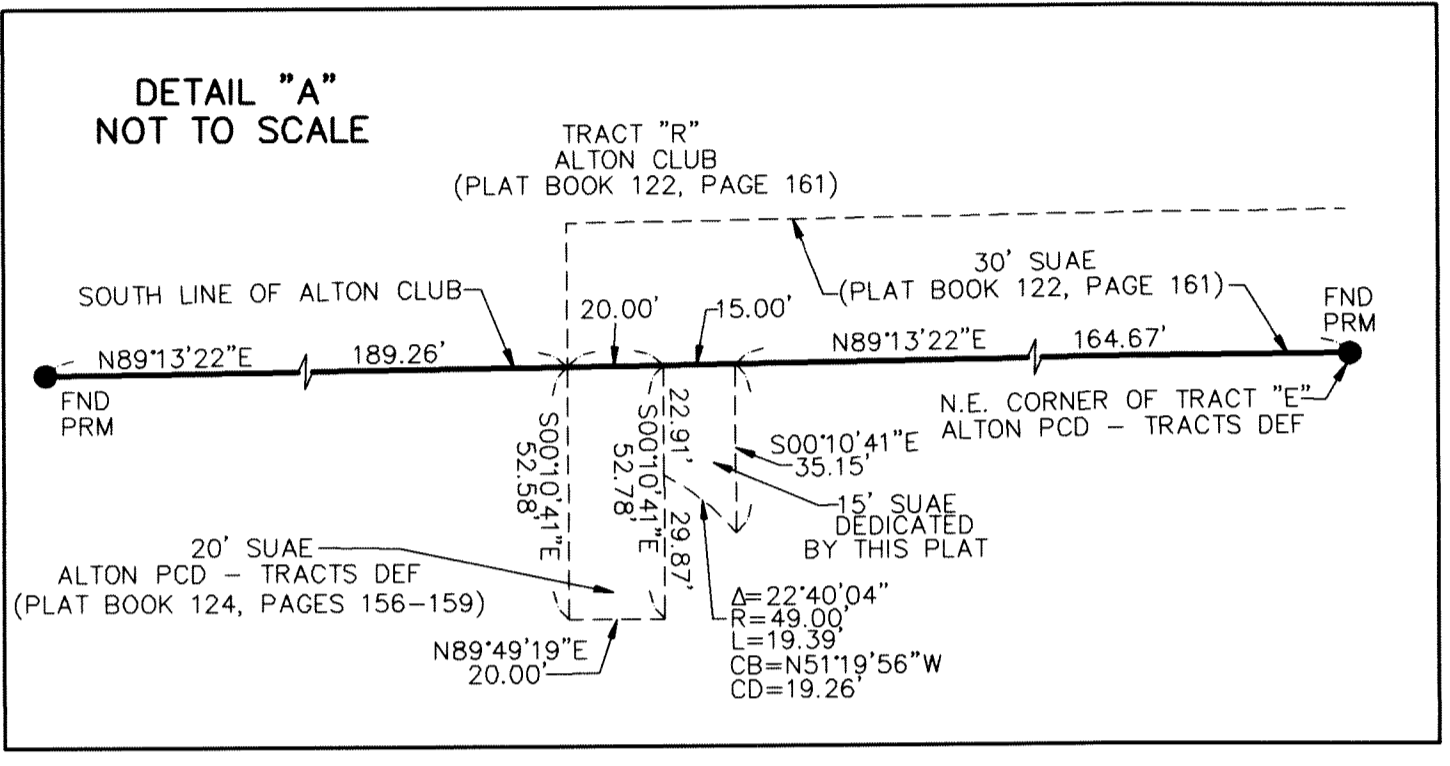
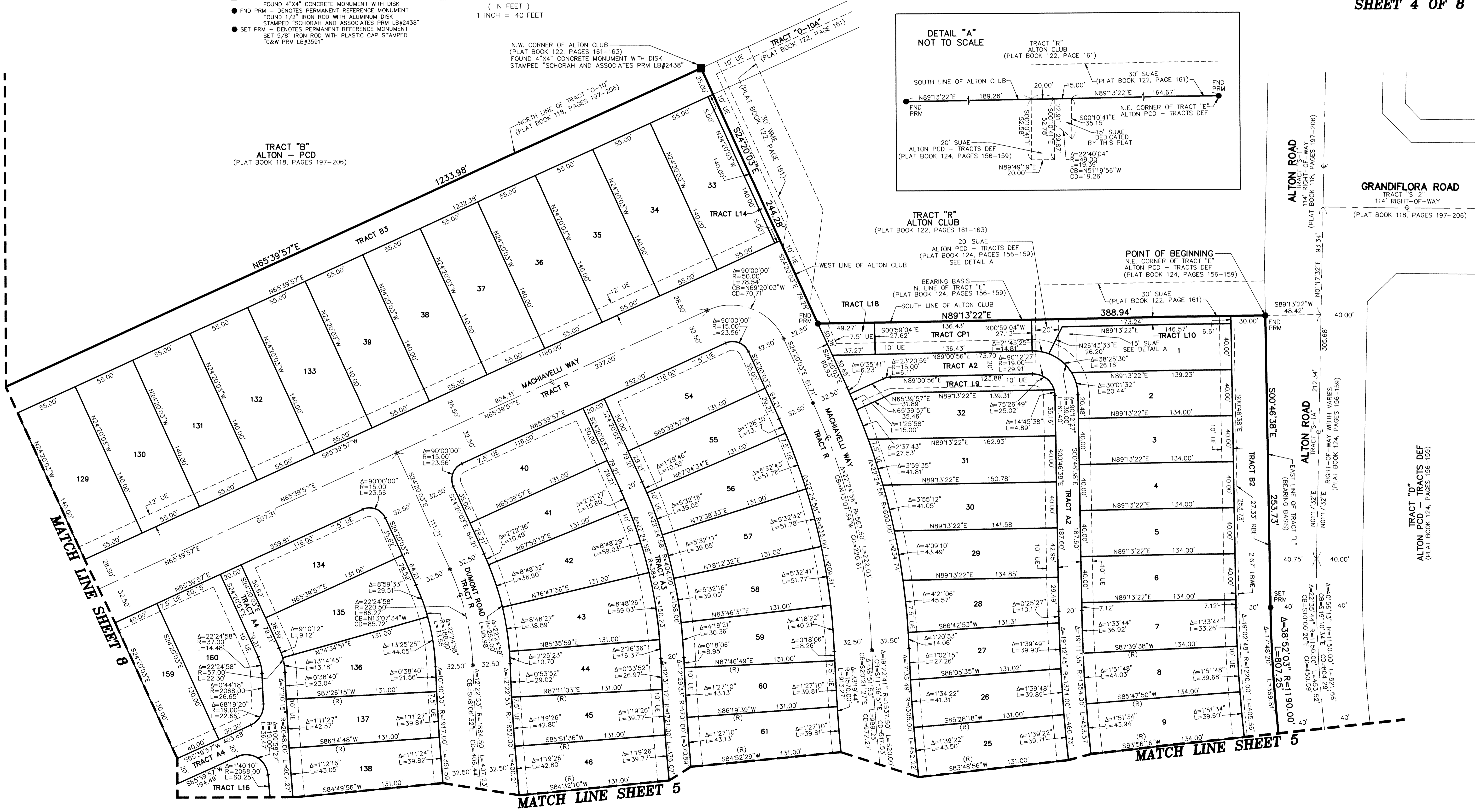
182

LEGEND / ABBREVIATIONS

- CENTERLINE
- Δ - DELTA (CENTRAL ANGLE)
- CB - CHORD BEARING
- CD - CHORD DISTANCE
- FBA - FIRE BREAK AREA
- L - ARC LENGTH
- LB - LICENSED BUSINESS
- LBWE - LANDSCAPE BUFFER WALL EASEMENT
- O.R.B. - OFFICIAL RECORD BOOK
- R - RADIUS
- RBE - ROADWAY BUFFER EASEMENT
- (R) - INDICATES RADIAL LINE
- SUAE - SEACOAST UTILITY AUTHORITY EASEMENT
- UE - UTILITY EASEMENT
- WME - WATER MANAGEMENT EASEMENT
- - DENOTES PERMANENT CONTROL POINT
- - DENOTES PERMANENT REFERENCE MONUMENT FOUND 4"x4" CONCRETE MONUMENT WITH DISK
- - DENOTES PERMANENT REFERENCE MONUMENT FOUND 1/2" IRON ROD WITH ALUMINUM DISK STAMPED "SCHORAH AND ASSOCIATES PRM LB#2438"
- - DENOTES PERMANENT REFERENCE MONUMENT SET 5/8" IRON ROD WITH PLASTIC CAP STAMPED "C&W PRM LB#3591"



SHEET 4 OF 8



GRANDIFLORA ROAD
 TRACT "S-2"
 114' RIGHT-OF-WAY
 (PLAT BOOK 118, PAGES 197-206)

ALTON ROAD
 114' RIGHT-OF-WAY
 (PLAT BOOK 118, PAGES 197-206)

ALTON ROAD
 TRACT "S-1A"
 114' RIGHT-OF-WAY WIDTH VARIES
 (PLAT BOOK 124, PAGES 156-159)

ALTON PCD - TRACTS DEF
 (PLAT BOOK 124, PAGES 156-159)

ALTON PCD - TRACTS DEF
 (PLAT BOOK 124, PAGES 156-159)

ALTON PCD - TRACTS DEF
 (PLAT BOOK 124, PAGES 156-159)

MATCH LINE SHEET 8

MATCH LINE SHEET 5

MATCH LINE SHEET 5